



Agenda TERENO Advisory Board Meeting, 16-17 September 2013

16 September 2013 (Monday)

Session 1:

10:00	Welcome on behalf of GFZ (Oliver Bens, Achim Brauer & Knut Kaiser)
10:30	Harry Vereecken (FZJ): TERENO overview
11:00	Elisabeth Krüger (UFZ): TERENO-Med overview
11:15	Thomas Pütz (FZJ): SoilCan/TERENO lysimeter study
11:30	Ralf Kunkel & Jens Klump (FZJ/GFZ): TERENO data management
11:45	Discussion
12:30	Lunch



Agenda TERENO Advisory Board Meeting, 16-17 September 2013 (cont.)

Session 2:

13:30	Theresa Blume (GFZ): Hydrology of a forested groundwater-dominated lake system: structures and processes
13:45	Roland Bol (FZJ): Long-term experiment Wüstebach – Examining impacts of deforestation on the organic matter, elemental and water cycle
14:00	Hans Peter Schmid & Ralf Kiese (KIT): GHG exchange of grassland ecosystems along a climate sequence in the TERENO pre-Alps Observatory
14:15	Ute Wollschläger (UFZ): Interdisciplinary research in the Schäfertal catchment: Overview and first results
14:30	Eckart Priesack (HMGU): Modelling tree sap flow based on 3D tree architectures obtained from terrestrial laser scans
14:45	Thomas Jagdhuber & Irena Hajsek (DLR): Radar Environmental Remote Sensing within TERENO
15:00	Discussion



Agenda TERENO Advisory Board Meeting, 16-17 September 2013 (cont.)

15:30	Internal meeting of the Advisory Board
16:30	Discussion Advisory Board with SSC
17:00	Poster session with beer & snacks
18:30	Bus transfer to “Müritzeum” Aquarium (and Museum) – approx. 5 km away from Klink
19:00	Guided tour through the aquarium part of “Müritzeum” with indigenous freshwater organisms
20:00	Dinner in the restaurant “Blaue Perle/Blue Perl” of “Müritzeum” basically with fish specialities of Lake Müritz (but even vegetarian and meat specialities will be served)
22:00	Bus transfer back to the hotel in Klink



"Müritzeum" Waren/Müritz





Agenda TERENO Advisory Board Meeting, 16-17 September 2013 (cont.)

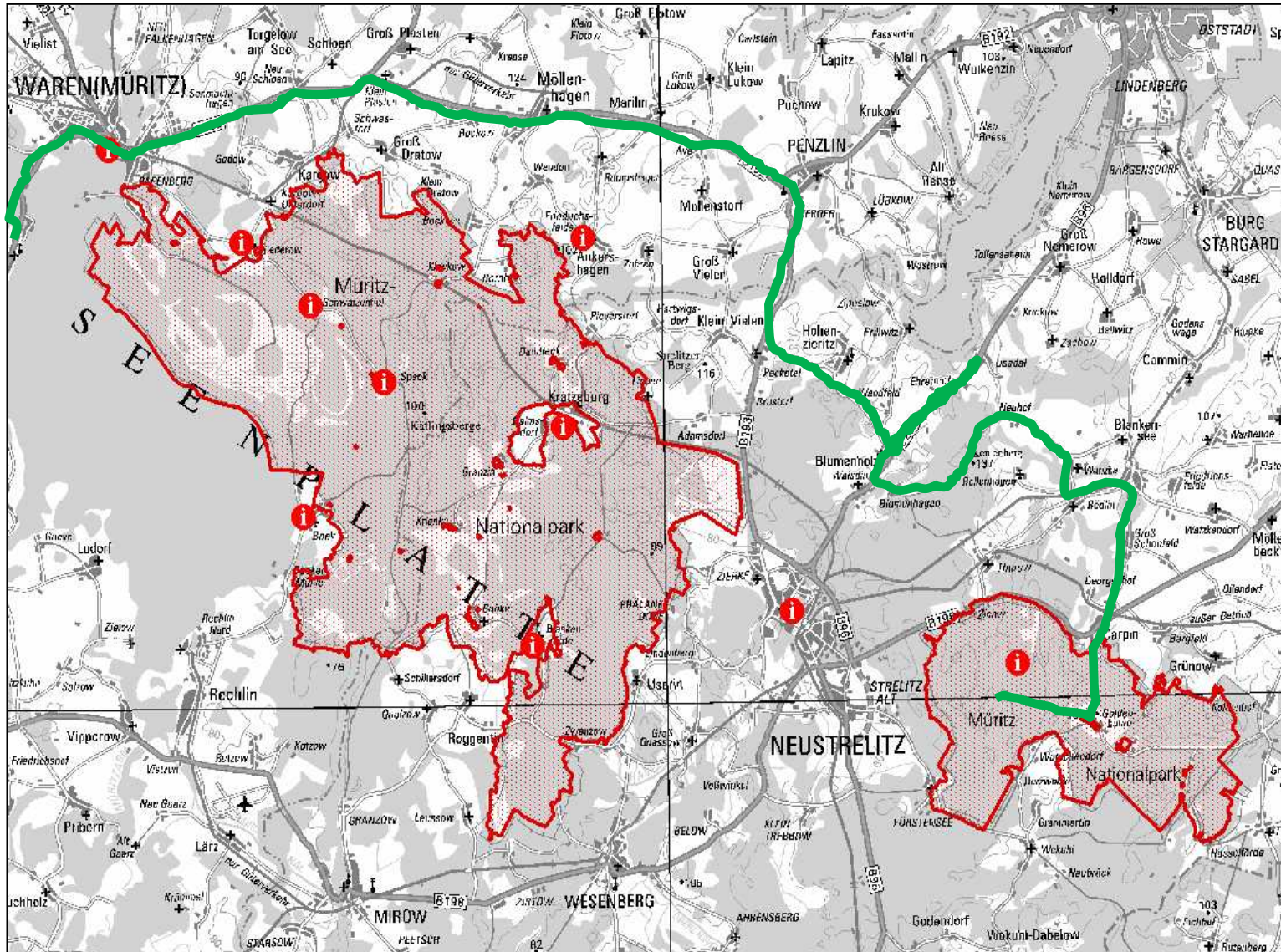
17 September 2013 (Tuesday)

Field Excursion to Müritz National Park

7:00	Departure for field excursion (Lake Fürstenseer See-Hinnensee, UNESCO- World Natural Heritage Site “Primeval Beech Forests around Serrahn”)
12:00	In the field: lunch, final feedback & coffee
14:00	Departure & transfer to Neustrelitz Station and Berlin-Tegel Airport
approx. 16:30	Arrival at Berlin-Tegel Airport



Route to the excursion site „Fürstensee-See-Hinnensee“ (National Park Müritz)



Local beer...

AB meeting 2012

Kloster
Siebeyer

20 x 0,5 L

12,99

GOLD HELL & EXPORT DUNKEL
KASTEN 20 x 0,5 L

SEIT 1119
Kloster
Siebeyer
KLOSTER-GOLD
HELL

PFAND 3,10 · LITERPREIS: 1,30 · GÜLTIG 26.08.-07.09.2013

This advertisement features a red background with the brand name 'Kloster Siebeyer' in a large, white, gothic-style font at the top. Below the name is a white plastic crate filled with beer bottles. In the foreground, a single bottle of 'Kloster Gold Hell' beer is shown, condensation on its surface. The bottle label includes the text 'SEIT 1119', 'Kloster Siebeyer', and 'KLOSTER-GOLD HELL'. At the bottom left, the price '12,99' is displayed in large blue numbers. To the right of the price, the text 'GOLD HELL & EXPORT DUNKEL' and 'KASTEN 20 x 0,5 L' is visible. At the very bottom, there is a small QR code and the text 'PFAND 3,10 · LITERPREIS: 1,30 · GÜLTIG 26.08.-07.09.2013'.

AB meeting 2013

20 x 0,5 L

Lübzer
Pils

Lübzer
Pils

This advertisement features a background of golden wheat stalks against a blue sky. In the foreground, a condensation-covered bottle of 'Lübzer Pils' beer is shown. The bottle label includes the text 'Lübzer Pils' and a logo. To the right of the bottle is a white plastic crate filled with beer bottles, also featuring the 'Lübzer Pils' branding. In the top right corner, the text '20 x 0,5 L' is displayed in white on a red background.